


Salud Foodgroup Europe	Product specification	
	<b>85 CRE 6K1</b> <b>Hot Cream Cheese Jalapeños</b>	Page: 1 of 8 Version: 0025 Date: 25-04-17 Written by: H. van Boxtel Approved by: A. Leijten
Het Goorke 61, 4906 CZ Oosterhout Netherlands	PO Box 4054 4900 CB Oosterhout Netherlands	Tel: +31 162 492 090 Fax: +31 162 465 589

### 1. Product photo



### 2. Product description

Frozen jalapeño pepper stuffed with cream cheese battered and breaded

### 3. Process description

Jalapeños halves are flushed with water, stuffed with cheese, coated with batter and breaded, prefried, frozen and packed

### 4. Variety / origin

Product is manufactured in The Netherlands. Origin of Jalapeños is Mexico

### 5. General requirements

All products must be manufactured under conditions consistent with Good Manufacturer Practices and must conform to all requirements outlined in EU legislation. Use of pesticides, herbicides and fungicides using any stage of growing/ harvesting of products will be registrated as to type. Usage will be in accordance with current regulations by the EU legislations and residues on the product will not exceed those limits established by EU legislation.

### 6. Organoleptic characteristics (after preparing)

Overall appearance : light yellow brown coated jalapeño halve  
Taste : typical breaded light spicy jalapeno filled with cream taste  
Smell : fried breaded jalapeño pepper filled with cheese  
Consistency : crunchy bite outside, soft inside  
Colour : light yellow-brown coating, green jalapeño, white/ very light yellow cheese.

Salud Foodgroup Europe	Product specification	
	<b>85 CRE 6K1</b> <b>Hot Cream Cheese Jalapeños</b>	Page: 2 of 8 Version: 0025 Date: 25-04-17 Written by: H. van Boxtel Approved by: A. Leijten
Het Goorke 61, 4906 CZ Oosterhout Netherlands	PO Box 4054 4900 CB Oosterhout Netherlands	Tel: +31 162 492 090 Fax: +31 162 465 589

## 7. Product codes

Article code : 85 CRE 6K1  
EAN code bag : 8715822000146  
EAN code case : 8715822000207  
Statistic/tarif code : 2106909849  
Lot code : y ddd ddd place time

## 8. Ingredients


CHEESE FILLING (26%) (FRESH CHEESE (90%), WHEAT STARCH, WHEY PROTEIN, thickener: E461, salt, acidity regulator: E330 & E450), Green Jalapeno pepper (24%), WHEAT FLOUR, water, rapeseed oil, rice flour, MODIFIED WHEAT STARCH, salt, WHEAT GLUTEN, maize flour, modified maize starch, yeast, raising agent: E503, colours: E150a, E160c, E100.

## 9. Nutritional values (per 100 g)

Kjoule :1002 kJ  
Kcal :240 kcal  
Total carbohydrates (of which) :26,1 g  
- Sugar :2,1 g  
Protein :5,2 g  
Fibre :2,2 g  
Fat, total (of which) :12,7 g  
- Saturated fatty acids :5,3 g  
- Mono unsaturated fatty acids :5,27 g  
- Poly unsaturated fatty acids :1,68 g  
- Trans fatty acids :0,14 g  
Calcium :60 mg  
Sodium :400 mg  
Salt :1 g

## 10. Microbiological standards

Total plate count :< 1.000.000 CfU/g  
Yeast and moulds :< 10.000 CfU/g  
Enterobacteriaceae :< 1.000 CfU/g  
E. Coli :< 100 CfU/g  
Staphylococcus Aureus :< 1.000 CfU/g  
Listeria Monocytogenes :< 100 CfU/g  
Salmonella :absent / 25 g

Salud Foodgroup Europe	Product specification	
	<p align="center"><b>85 CRE 6K1</b> <b>Hot Cream Cheese Jalapeños</b></p>	Page: 3 of 8 Version: 0025 Date: 25-04-17 Written by: H. van Boxtel Approved by: A. Leijten
Het Goorke 61, 4906 CZ Oosterhout Netherlands	PO Box 4054 4900 CB Oosterhout Netherlands	Tel: +31 162 492 090 Fax: +31 162 465 589

### 11.Storage conditions

Product temperature throughout all phases of storage and shipping will be < -18°C, a short increase of temperature during transport till -15°C is allowed. Temperature control during storage and transport is conform EU legislation.

### 12.Storage requirements

Store and transport products below -18°C. Keep direct packaging closed.

### 13.Shelf life

After production date:

\*-6°C: 1 week

\*\* -12°C: 1 month

\*\*\*-18°C: 24 months

Do not refreeze after thawing.

### 14.Preparation / cooking instructions

#### Deep fryer:

Preheat oil at 180°C. Deep fry in small portions from frozen in oil for 3 - 3,5 minutes. Keep temperature of oil at 180°C.

Leave 2 minutes on a plate before serving.

#### Conventional oven:

Preheat the oven to 220°C, arrange in single layer, cook for 10-12 minutes. Turn once during cooking.


### 15.Foreign material standards

- Product shall be free of all foreign material.
- Product will pass through a functional metal detector with a positive rejection device.

Fe                    2,5 mm

Non Fe              3,0 mm

RVS                  3,0 mm


Salud Foodgroup Europe	Product specification	
	<b>85 CRE 6K1 Hot Cream Cheese Jalapeños</b>	Page: 4 of 8 Version: 0025 Date: 25-04-17 Written by: H. van Boxtel Approved by: A. Leijten
Het Goorke 61, 4906 CZ Oosterhout Netherlands	PO Box 4054 4900 CB Oosterhout Netherlands	Tel: +31 162 492 090 Fax: +31 162 465 589

### 16. Physical standards

Description / kg	Target	Range
Counts per kg	30	27-33
Pick up	50%	47-53%
Amount with any kind of deviations/kg	0	Max. 6
Empty peppers	0	Max. 1
Deformed	0	Max. 2
Open spots in coating >4mm < 2cm	0	Max. 4
Open spots in coating > 2 cm	0	Max. 4
Weak spots > 4 mm	0	Max. 6
Clusters	0	max.1
Loose crumb, coating in bag	0	Max. 20 g
Loose pieces per bag	0	Max. 3


### 17. Chemical standards

Description	Target	Range

Salud Foodgroup Europe	Product specification	
	<b>85 CRE 6K1 Hot Cream Cheese Jalapeños</b>	Page: 5 of 8 Version: 0025 Date: 25-04-17 Written by: H. van Boxtel Approved by: A. Leijten
Het Goorke 61, 4906 CZ Oosterhout Netherlands	PO Box 4054 4900 CB Oosterhout Netherlands	Tel: +31 162 492 090 Fax: +31 162 465 589


### 18. Allergy data

1	Milk protein	+	Wheat meal	-	EKO/ organic	-
2	Lactose	+	Wheat starch	+	Suitable for vegetarians	+
3	Eggs	-	Bread crumb	+	Suitable for vegans	-
4	Soy protein	-	Egg yolk	-	Halal	-
5	Soy oil	-			Kosher	-
6	Gluten	+	Starch	+		
7	Wheat	+	Modified starch	+		
8	Rye	-	Malto dextrine	-		
9	Beef	-	Honey	-		
10	Pork	-	Barley	-		
11	Chicken	-	Chicory	-		
12	Fish	-	Lentil	-		
13	Shellfish and crustaceans	-	Pea	-		
14	Maize	+	Tomato	-		
15	Cocoa	-	Pine nut/ kernel	-		
16	Legumes	-	Buck wheat	-		
17	Nuts	-	Apricot	-		
18	Nut oil	-	Tofu	-		
19	Peanuts	-	Avocado	-		
20	Peanut oil	-	Banana	-		
21	Sesame	-	Kiwi	-		
22	Sesame oil	-	Peach	-		
23	Glutamate	-	Apple	-		
24	Sulfite (E220-E227)	-	Garlic	-		
25	Coriander	-	Cinnamon	-		
26	Celery	-	Curry	-		
27	Carrot	-	Parsley	-		
28	Lupine	-	Cochenille	-		
29	Mustard	-	Cochenille red	-		
30	Molluscs and molluscs products	-	Yeast	+		
31	Milk constituents	+	Vanillin	-		
32	Milk powder	-		-		
33	Soy lecithin	-		-	Present	+
34	Soy flour	-		-	Absent	-
35	Soy meal	-		-	Might contain	?
36	Wheat flour	+		-	Unknown	U

Salud Foodgroup Europe	Product specification	
	<b>85 CRE 6K1 Hot Cream Cheese Jalapeños</b>	Page: 6 of 8 Version: 0025 Date: 25-04-17 Written by: H. van Boxtel Approved by: A. Leijten
Het Goorke 61, 4906 CZ Oosterhout Netherlands	PO Box 4054 4900 CB Oosterhout Netherlands	Tel: +31 162 492 090 Fax: +31 162 465 589

### 19. Packaging information

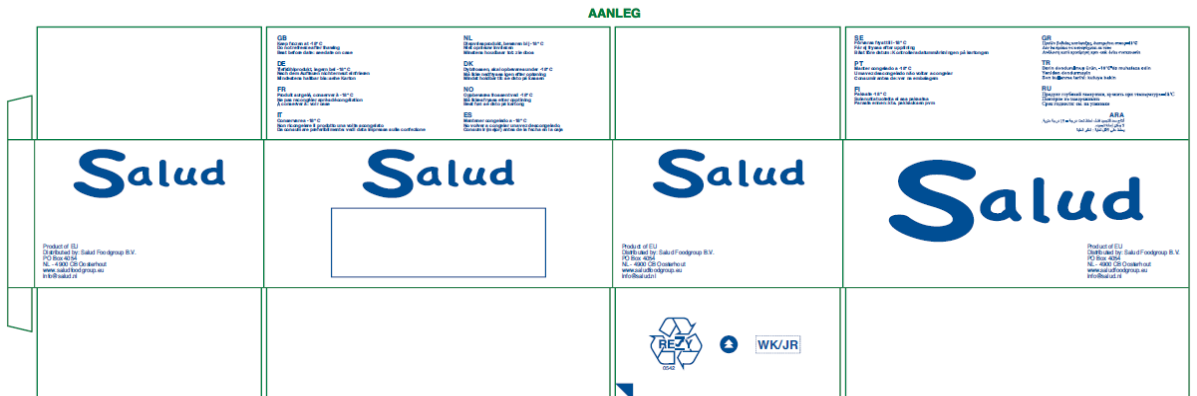
<b>Inner packaging</b>		
Material	PE	
Foil thickness	90µ	
Bag size LxW	330 x 240 mm	
Net weight	1000 g e	
Gross weight	1030 g	
<b>Outer packaging</b>		
Case material	Double wave cardboard	
Case weight	360 g	
Material thickness	3 mm	
Case size LxWxH (external)	394 x 261 x 172 mm	
Inner packagings/case	6	
Net weight	6000 g	
Gross weight	6540 g	
<b>Palletisation</b>		
Pallet type	EURO	BLOK/UK
Layers/pallet	11	11
Cases/pallet	99	110
Net. Weight	594 kg	660 kg
Gross weight (inc. pallet)	668 kg	745 kg
Dimensions (ex. Pallet) LxWxH	1182 x 783 x 1892 mm	1182 x 916 x 1892 mm


<b>Salud Foodgroup Europe</b>	<b>Product specification</b>	
	<b>85 CRE 6K1 Hot Cream Cheese Jalapeños</b>	Page: 7 of 8 Version: 0025 Date: 25-04-17 Written by: H. van Boxtel Approved by: A. Leijten
Het Goorke 61, 4906 CZ Oosterhout Netherlands	PO Box 4054 4900 CB Oosterhout Netherlands	Tel: +31 162 492 090 Fax: +31 162 465 589

**20. Picture inner packaging material**



**21. Picture outside case**



Salud Foodgroup Europe	Product specification	
	<p align="center"><b>85 CRE 6K1</b> <b>Hot Cream Cheese Jalapeños</b></p>	Page: 8 of 8 Version: 0025 Date: 25-04-17 Written by: H. van Boxtel Approved by: A. Leijten
Het Goorke 61, 4906 CZ Oosterhout Netherlands	PO Box 4054 4900 CB Oosterhout Netherlands	Tel: +31 162 492 090 Fax: +31 162 465 589

## 22. Picture case label

# Hot Cream Cheese Jalapeños

Product code: 85CRE6K1    Product of EU  
 Weight: 6kg    6/1000 g<sup>e</sup>



**EXP: 02-12-2013**  
**PD: 02-12-2011**  
**L : 1336336 EB 16:08**