


Salud Foodgroup Europe	Product specification	
	<p align="center">85RHJ6K1 Red hot jalapeño 6x1kg</p>	<p>Page: 1 of 7 Version: 0028 Date: 20-10-2020 Written by: H. van Boxtel</p>

1. Product photo



2. Product description

Frozen battered and breaded stuffed red jalapeño halves

3. Process description

red jalapeños halves are flushed with water, stuffed with cheese, coated with batter and breader, prefried, frozen and packed

4. Variety / origin

Product is packed in the Netherlands


5. General requirements

All products must be manufactured under conditions consistent with Good Manufacturer Practices and must conform to all requirements outlined in EU legislation. Use of pesticides, herbicides and fungicides using any stage of growing/ harvesting of products will be registrated as to type. Usage will be in accordance with current regulations by the EU legislations and residues on the product will not exceed those limits established by EU legislation.

All products are no subject to ionization.

6. Organoleptic characteristics

Parameter	Value
Overall appearance	light yellow brown coated red jalapeño halve with yellow/ white
Taste	cheese filling
Smell	very spicy, with cream cheese taste and typical coated
Consistency	fried breaded spicy jalapeño pepper filled with cheese
Color	crunchy bite outside, soft inside
	light yellow-brown coating, red jalapeño, white/ yellow cheese.

Salud Foodgroup Europe	Product specification	
	85RHJ6K1 Red hot jalapeño 6x1kg	Page: 2 of 7 Version: 0028 Date: 20-10-2020 Written by: H. van Boxtel

7. Product codes

Article code	85RHJ6K1
GTIN code inner unit	8717154050103
GTIN code case	8717154055108
Statistic/tariff code	2106909849
Lot code	Y DDD DDD PP HH:MM

8. Ingredients


wheat flour (WHEAT), red jalapeno pepper 24%, cream cheese (70% fat content in dry matter) (MILK) 24%, water, vegetable oil (rapeseed), modified wheat starch (WHEAT), rice flour, wheat gluten (WHEAT), salt, milk protein (MILK), maize flour, modified maize starch, wheat starch (WHEAT), yeast, thickener (E461 (methylcellulose)), capsicum extract, colour (E160c (paprika extract)), turmeric extract, caramelised sugar, acidity regulator (E330 (citric acid)), E450i (disphosphates))

9. Nutritional values (per 100 g)

Parameter	Value per 100 g	Unit
Kjoule	1033	kJ
Kcal	247	kcal
Total carbohydrates (of which)	29,0	gr
- Sugar	2,3	gr
Protein	5,4	gr
Fibre	1,6	gr
Fat, total (of which)	12,1	gr
- Saturated fatty acids	5,1	gr
- Mono unsaturated fatty acids	5,3	gr
- Poly unsaturated fatty acids	1,6	gr
- Trans fatty acids	0,0	gr
Sodium	530	mg
Salt	1,30	gr

10. Microbiological standards

Parameter	Value	Unit
Total plate count	< 1.000.000	Cfu/g
Yeast	< 10.000	Cfu/g
Moulds	< 10.000	Cfu/g
Enterobacteriaceae	< 1.000	Cfu/g
E. coli	< 100	Cfu/g
Staphylococcus Aureus	< 1.000	Cfu/g
Listeria Monocytogenes	< 100	Cfu/g
Salmonella	Absent / 25 g	

Salud Foodgroup Europe	Product specification	
	85RHJ6K1 Red hot jalapeño 6x1kg	Page: 3 of 7 Version: 0028 Date: 20-10-2020 Written by: H. van Boxtel

11.Storage requirements

Product temperature throughout all phases of storage and shipping will be < -18°C, a short increase of temperature during transport till -15°C is allowed. Temperature control during storage and transport is conform EU legislation. Store and transport products below -18°C. Keep direct packaging closed.

12.Shelf life

Do not refreeze after thawing.

Closed packaging: after production date:

-18°C: 24 months

13. Foreign material standards

- Product shall be free of all foreign material
- Product will pass through a functional metal detector with a positive rejection device.

14.Preparation/cooking instructions

Deep fryer:

Preheat oil at 180°C. Deep fry in small portions from frozen in oil for 3-3,5 minutes. Keep temperature of oil at 180°C.

Leave 2 minutes on a plate before serving.


Conventional oven: Preheat the oven to 220°C, arrange in single layer, cook for 10-12 minutes. Turn once during cooking.

15.Physical standards

Parameter	Value (range)	Unit
Amount with any kind of deviations	max. 6	
Clusters	max. 1	
Deformed	max. 2	
Empty peppers	max.1	
Loose crumb, coating in bag	max. 20 g	
Loose pieces per bag	max. 3	
Open spots in coating > 2 cm	max. 4	
Open spots in coating >4mm < 2cm	max. 4	
Pick up	50 (47-53)	%
Piece count	27 (24-30)	pieces/kg
Weak spots > 4 mm	max. 6	

16.Claims

Vegetarian


Salud Foodgroup Europe	Product specification	
	85RHJ6K1 Red hot jalapeño 6x1kg	Page: 4 of 7 Version: 0028 Date: 20-10-2020 Written by: H. van Boxtel

non-GMO

17. Allergy data


	Allergens (by legislation)	Present / Absent
1	Gluten	
1.1	wheat	+
1.2	rye	-
1.3	barley	-
1.4	oats	-
1.5	spelt	-
1.6	kamut	-
2.0	crustaceans	-
3.0	egg	-
4.0	fish	-
5.0	peanuts	-
6.0	soy	-
7.0	milk	+
8	Nuts	
8.1	almonds	-
8.2	hazelnuts	-
8.3	walnuts	-
8.4	cashews	-
8.5	pecan nuts	-
8.6	Brazil nuts	-
8.7	pistachio nuts	-
8.8	macadamia nuts	-
9.0	celery	-
10.0	mustard	-
11.0	sesame	-
12.0	sulphur dioxide and sulphites	-
13.0	lupin	-
14.0	molluscs	-
	Additional allergens	Present / Absent
20.0	lactose	+
21.0	cocoa	-
22.0	glutamate (E620-E625)	-
23.0	chicken meat	-
24.0	coriander	-
25.0	corn	+
26.0	legumes	-
27.0	beef	-
28.0	pork	-
29.0	carrot	-

+ Present | - Absent | +/- Traces | ? Unknown

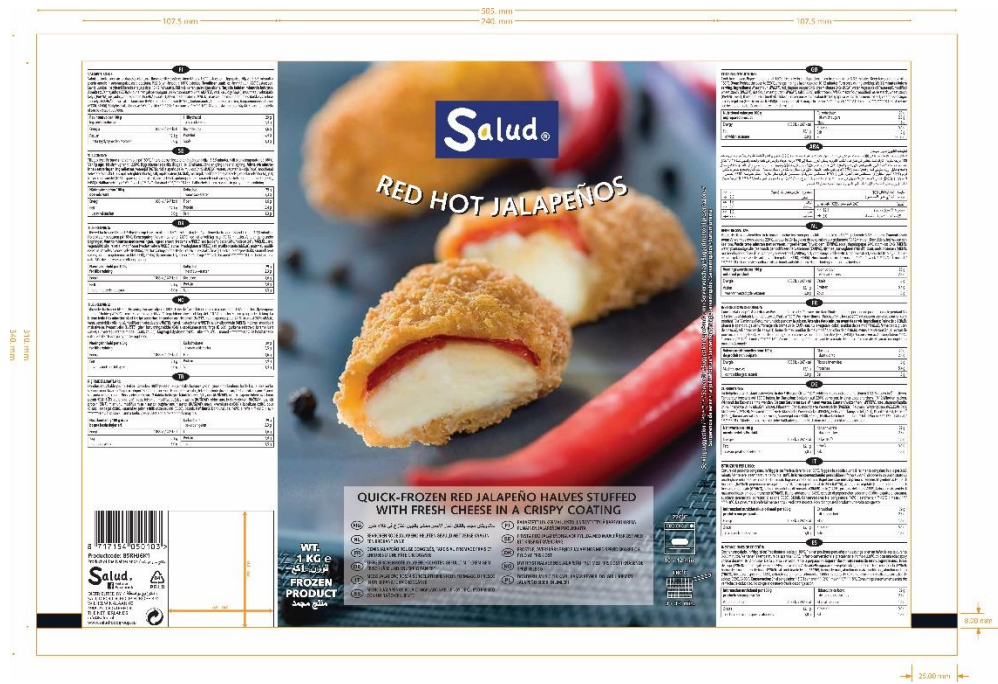
Salud Foodgroup Europe	Product specification	
	<p align="center">85RHJ6K1 Red hot jalapeño 6x1kg</p>	<p>Page: 5 of 7 Version: 0028 Date: 20-10-2020 Written by: H. van Boxtel</p>

18. Packaging information

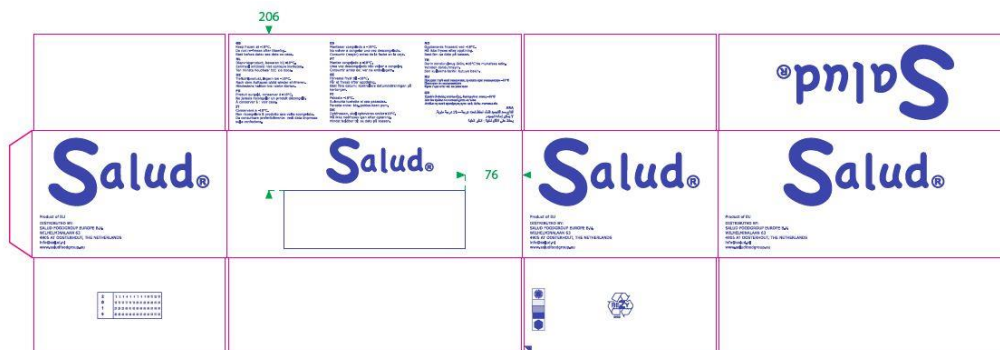
Parameter	Value
INNER PACKAGING	
Material inner packaging	LDPE
Size inner packaging LxWxH (external)	330 x 240 mm
Net weight	1000 g
Gross weight	1030 g
OUTER PACKAGING	
Case material	Double wave cardboard
Case weight	360 g
Material thickness	3 mm
Case size LxWxH (external)	394 x 261 x 172 mm
Inner packagings / case	6
Inner packagings/octabin	
Net weight	6000 g
Gross weight	6540 g
PALLETISATION	
Pallet type	EURO
Layers / pallet	11
Cases / pallet	99
Net weight	594 kg
Gross weight (inc. pallet)	668 kg
Dimensions (ex. pallet) LxWxH	1200 x 800 x 1892 mm
PALLETISATION (2nd option)	
Pallet type	UK
Layers / pallet	11
Cases / pallet	110
Net weight	660 kg
Gross weight (inc. pallet)	745 kg
Dimensions (ex. pallet) LxWxH	1200 x 1000 x 1892 mm


Salud Foodgroup Europe	Product specification	
	<p align="center">85RHJ6K1 Red hot jalapeño 6x1kg</p>	<p>Page: 6 of 7 Version: 0028 Date: 20-10-2020 Written by: H. van Boxtel</p>

19. Picture inner packaging



20. Picture outer packaging



Salud Foodgroup Europe	Product specification	
	<p align="center">85RHJ6K1 Red hot jalapeño 6x1kg</p>	<p>Page: 7 of 7 Version: 0028 Date: 20-10-2020 Written by: H. van Boxtel</p>

85RHJ6K1_CasePrint_200819.tif




RED HOT JALAPEÑOS

EXP: 24 MAANDEN
PD: 24 MAANDEN
L: 16:17

KEEP FROZEN AT -18°C. DO NOT REFREEZE AFTER THAWING.
BEST BEFORE DATE: SEE DATE ON CASE.

DISTRIBUTED BY:
SALUD FOODGROUP EUROPE B.V.
WILHELMINALAAN 63
4905 AT OOSTERHOUT
THE NETHERLANDS
info@salud.nl
www.saludfoodgroup.eu

Product code: 85RHJ6K1
Weight: 6kg 6/1000 g 
Product of the Netherlands



8 7 1 7 1 5 4 1 0 3 5 1 0 8 1 1